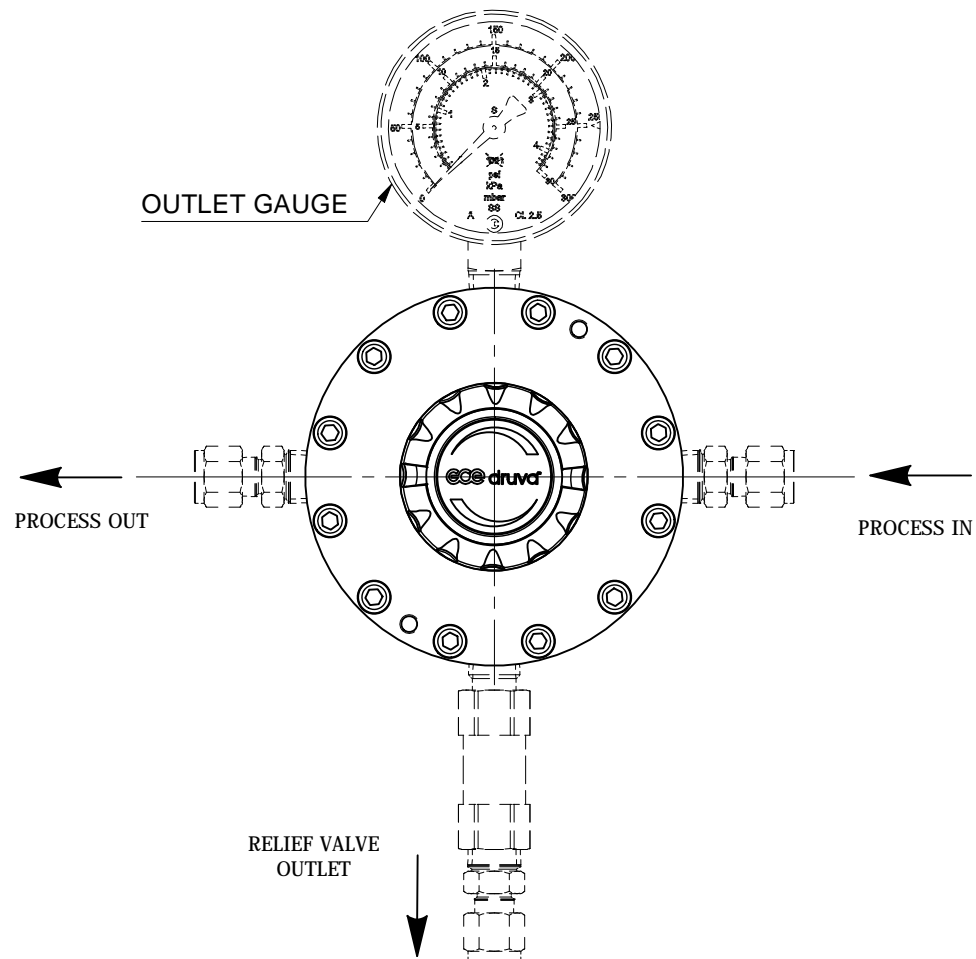
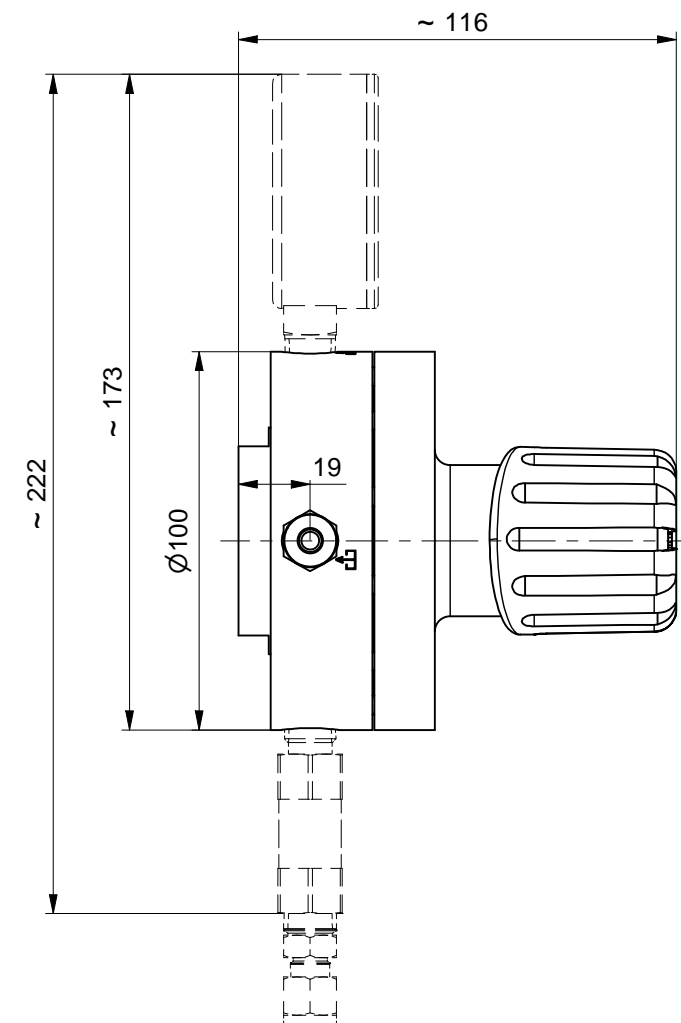
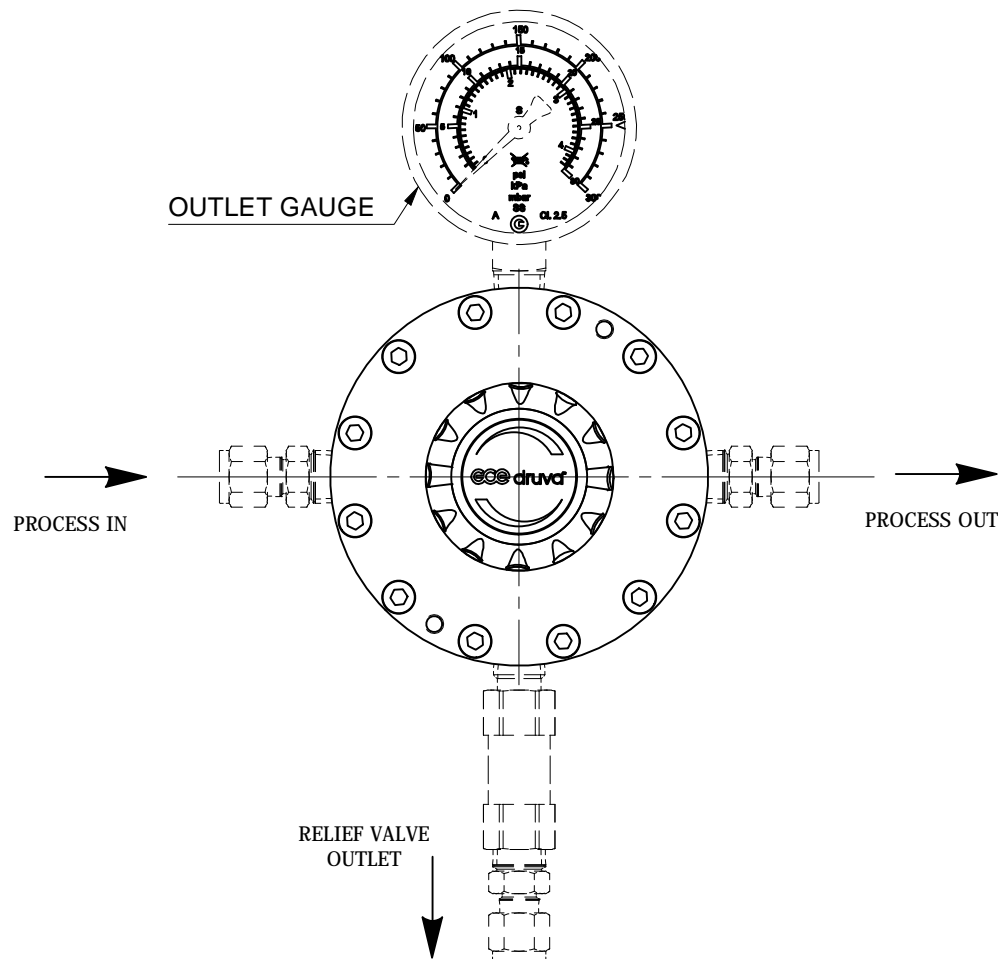


RIGHT INLET - (JR)



LEFT INLET - (JL)



ORDERING INFORMATION

LSBPVS FX XX XX XX XX XXXX XXXX XX XXXX

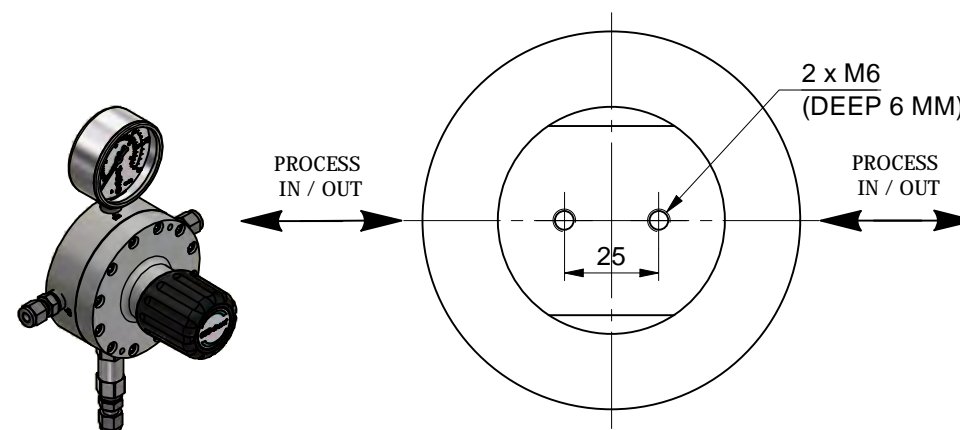
PORTING CODE: R - RIGHT INLET L - LEFT INLET	RELIEF CONNECTION: 0001 - WITHOUT (PLUGGED) MORE VERSIONS ON LIST OF CONN.
INLET PRESSURE: D1 - 12 BAR E1 - 40 BAR	SAFETY DEVICE: 00 - WITHOUT (NPT1/4 INCH FEMALE) 01 - WITHOUT (PLUGGED) RV - PRESSURE RELIEF VALVE (FOR OUTLET PRESSURE 1,3 BAR / 3 BAR)
OUTLET PRESSURE: A4 - 0,25 BAR A3 - 0,45 BAR A2 - 1,3 BAR BX - 3 BAR (ONLY FOR INLET PRESSURE 40 BAR)	PROCESS OUTLET CONNECTION: N14F - NPT1/4 INCH FEMALE M03S - COMPRESSION FITTING 3MM SS M06S - COMPRESSION FITTING 6MM SS M08S - COMPRESSION FITTING 8MM SS MORE VERSIONS ON LIST OF CONNECTIONS
INLET GAUGE TYPE: 00 - WITHOUT (PORTING F)	PROCESS INLET CONNECTION: N14F - NPT1/4 INCH FEMALE M03S - COMPRESSION FITTING 3MM SS M06S - COMPRESSION FITTING 6MM SS M08S - COMPRESSION FITTING 8MM SS MORE VERSIONS ON LIST OF CONNECTIONS
OUTLET GAUGE TYPE: 00 - WITHOUT (NPT1/4 INCH FEMALE) 01 - WITHOUT (PLUGGED) BT - BOURDON TUBE	

LIST OF CONNECTIONS

- N14F - NPT1/4 INCH FEMALE
- M03S - COMPRESSION FITTING 3MM SS
- M06S - COMPRESSION FITTING 6MM SS
- M08S - COMPRESSION FITTING 8MM SS
- M10S - COMPRESSION FITTING 10MM SS
- M12S - COMPRESSION FITTING 12MM SS
- IX2S - COMPRESSION FITTING 1/8" SS
- IX4S - COMPRESSION FITTING 1/4" SS
- IX6S - COMPRESSION FITTING 3/8" SS
- IX8S - COMPRESSION FITTING 1/2" SS
- H04S - HOSE NOZ MET 4.8 MM SS
- H06S - HOSE NOZ MET 6.4 MM SS
- H08S - HOSE NOZ MET 8.0 MM SS

HOSE NOZZLE MAX. 15 BAR

BOTTOM VIEW



TECHNICAL SPECIFICATION

MATERIAL OF GAS WETTED PARTS:
REGULATOR BODY: STAINLESS STEEL (1.4404)
REGULATOR DIAPHRAGM: HASTELLOY (C276)
REGULATOR SEAL: PCTFE
REGULATOR SEAT: FKM
REGULATOR POPPET: STAINLESS STEEL (1.4404)

INLET PRESSURE: MAX. 40 BAR
FLOW NOMINAL: 5 Nm³/h (N₂)
ACC. TO ISO 7291 AT 3 BAR OUT

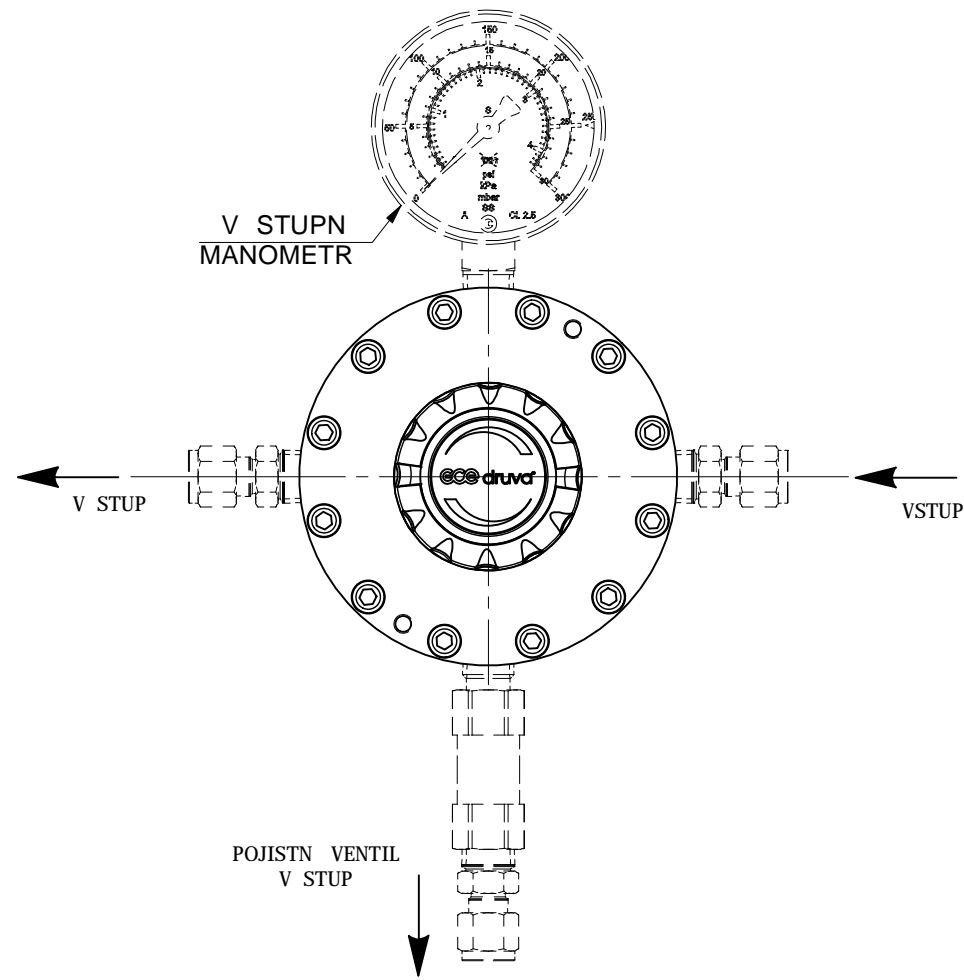
GAS TYPE
DEFINED BY PRODUCT LINE AND TYPE
(CHECK APPROVED GAS TYPE IN DATASHEET)

SST LINE:
INCLUDING CORROSIVE GASES
INCLUDING TOXIC GASES

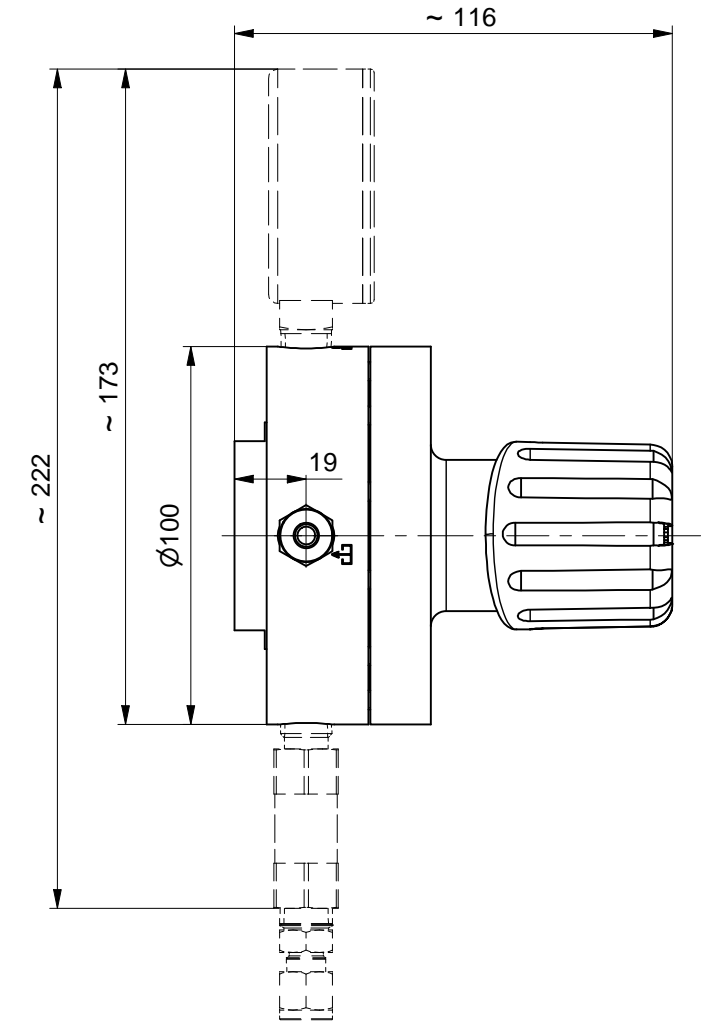
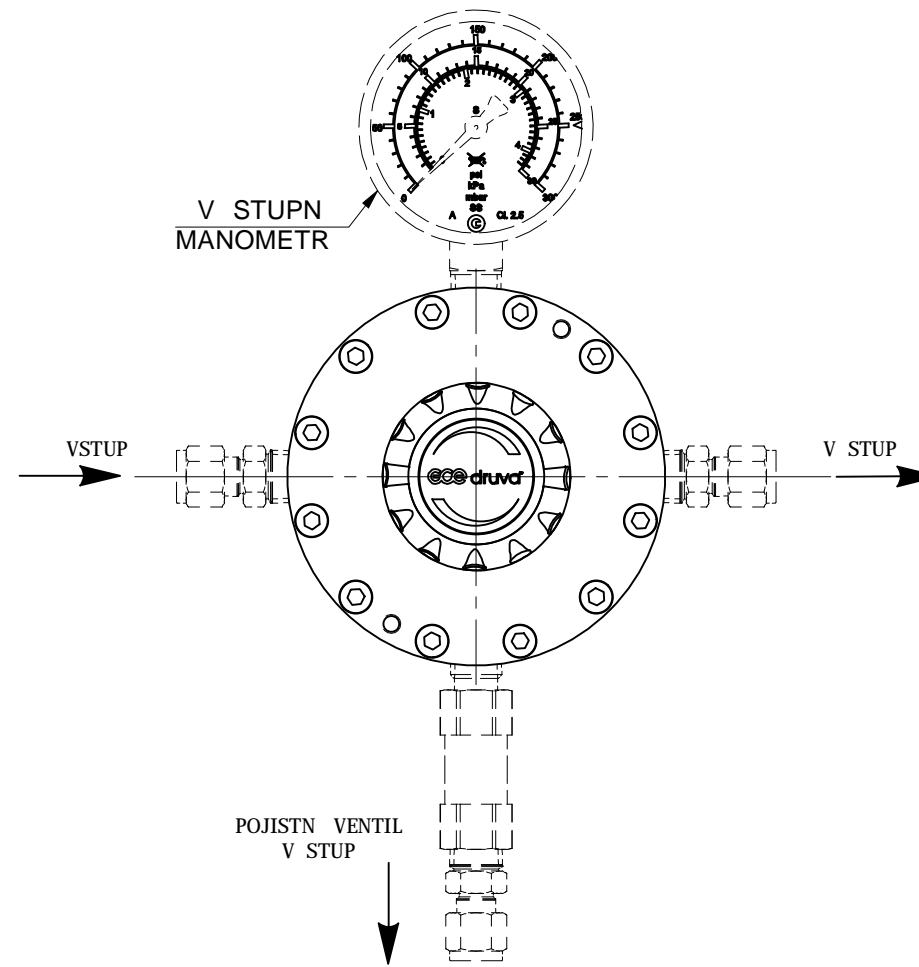
EXAMPLE: LSBPVSRD1A4BTBTM06SM06S010001

Polotovár Raw material	Rozm r polotovaru Dim. of raw material	Povrchovz +prava Surface finish	Hmotnost Weight	2,57 kg
Materiál Material	Materiál Material	Star v kres Old drawing	List / Po et list Sheet / Number of sheets	1 / 2
Komentz Notice	Kritick rozm r zna en Critical dimension marked	KR		
Datum vypracovni Creation date	Opracovni / Machining Ra	Neto.rozm ry / Dim. without tol. ISO 2768 m,K	LINE-REG SST-LINE LOW FLOW PV	
Vypracoval Created			LINREG SST 005Q PV S 4PORTF 1IN 3OUT	
Kontroloval Inspected			ECC	LSBPVSF
Schválil Approved	M ško / Scale			
Klasifikace Item Class	1:2			

VSTUP ZPRAVA - (JR)



VSTUP ZLEVA - (JL)



OBJEDNÁVKA - INFORMACE

LSBPVS FX XX XX XX XX XXXX XXXX XX XXXX

ORIENTACE PORT :

R - VSTUP ZPRAVA
L - VSTUP ZLEVA

VSTUPNĀ TLAK:

D1 - 12 BAR
E1 - 40 BAR

V STUPNĀ TLAK:

A4 - 0.25 BAR
A3 - 0.45 BAR
A2 - 1,3 BAR
BX - 3 BAR (PRO VSTUPNĀ TLAK 40 BAR)

VSTUPNĀ MANOMETR:

00 - BEZ (PORT F)

V STUPNĀ MANOMETR:

00 - BEZ (NPT1/4" VNIT NĀ)
01 - BEZ (ZĀTKA)
BT - BOURDONOVA TRUBICE

P IPOJENĀ ZA POJISTKOU:

0001 - BEZ (ZĀTKA)
VIZ INFO - SEZNAM P IPOJENĀ

POJISTN VENTIL:

00 - BEZ (NPT1/4" VNIT NĀ)
01 - BEZ (ZĀTKA)
RV - POJISTN VENTIL
(PRO V. ST. TLAK 1,3 BAR / 3 BAR)

V STUPNĀ P IPOJENĀ:

N14F - NPT1/4" VNIT NĀ
M03S - KOMPRESNĀ P ĀPOJKA 3MM NEREZ
M06S - KOMPRESNĀ P ĀPOJKA 6MM NEREZ
M08S - KOMPRESNĀ P ĀPOJKA 8MM NEREZ
VIZ INFO - SEZNAM P IPOJENĀ

VSTUPNĀ P IPOJENĀ:

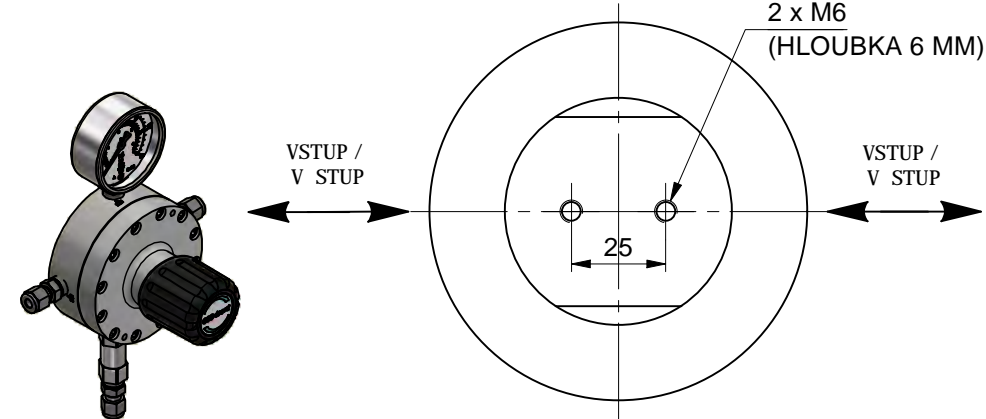
N14F - NPT1/4" VNIT NĀ
M03S - KOMPRESNĀ P ĀPOJKA 3MM NEREZ
M06S - KOMPRESNĀ P ĀPOJKA 6MM NEREZ
M08S - KOMPRESNĀ P ĀPOJKA 8MM NEREZ
VIZ INFO - SEZNAM P IPOJENĀ

SEZNAM P ĀPOJENĀ

N14F - NPT1/4" VNIT NĀ
M03S - KOMPRESNĀ P ĀPOJKA 3MM NEREZ
M06S - KOMPRESNĀ P ĀPOJKA 6MM NEREZ
M08S - KOMPRESNĀ P ĀPOJKA 8MM NEREZ
M10S - KOMPRESNĀ P ĀPOJKA 10MM NEREZ
M12S - KOMPRESNĀ P ĀPOJKA 12MM NEREZ
IX2S - KOMPRESNĀ P ĀPOJKA 1/8" NEREZ
IX4S - KOMPRESNĀ P ĀPOJKA 1/4" NEREZ
IX6S - KOMPRESNĀ P ĀPOJKA 3/8" NEREZ
IX8S - KOMPRESNĀ P ĀPOJKA 1/2" NEREZ
H04S - HADIC. NĀST. 4.8 MM NEREZ
H06S - HADIC. NĀST. 6.4 MM NEREZ
H08S - HADIC. NĀST. 8.0 MM NEREZ

HADICOVĀ NĀSTAVCE MAX. 15 BAR

POHLED ZESPODU



TECHNICKĀ SPECIFIKACE

MATERIĀL POLOBEK VE STYKU S PLYNEM:
T LESO: NEREZ (1.4404)
MEMBRĀNA: HASTELLOY (C276)
T SN NĀ PCTFE
SEDLO RED. VENTILU: FKM
KUPELKA: NEREZ (1.4404)

VSTUPNĀ TLAK: MAX. 40 BAR
JMENOVIT PR TOK: 5 m³/h (N2)
DLE ISO 7291 P 1 3 BAR NA V STUPU

TYP PLYNU
DEFINOVĀN PRODUKTOVOU ADOU A TYPEM
(KONTROLUJ SCHVĀLEN TYP PLYNU
V KAT. LISTU)

ADA PUR:
PRO KOROZIVNĀ PLYNU
PRO TOXICKĀ PLYNU

Polotovar Raw material	Rozm r polotovaru Dim. of raw material	Povrchov Ārava Surface finish	Hmotnost Weight	2,57 kg
Materizl Material	Materizl Material	Star v kres Old drawing	List / Po et list Sheet / Number of sheets	2 / 2
Komentz Notice	kritick rozm r zna en Critical dimension marked	KR		
Datum vypracovz Creation date	27.04.2020	Opracovz Ra	Netol.rozm ry / Dim. without tol.	ISO 2768 m,K
Vypracovl Created	Ondracek Lubos	M ĩko / Scale		
Kontroloval Inspected	P. Novotny			
Schvzill Approved	Dr. Th. Kuester			
Klasifikace Item Class	B: Standard			

LINE-REG SST-LINE LOW FLOW PV
LINREG SST 005Q PV S 4PORTF 1IN 3OUT

LSBPVSF

P ĀKLAD: LSBPVSFRD1A4BTBTM06SM06S010001